

ROADWAY AND BRIDGE DEFICIENCIES



Structural Roadway Deficiencies



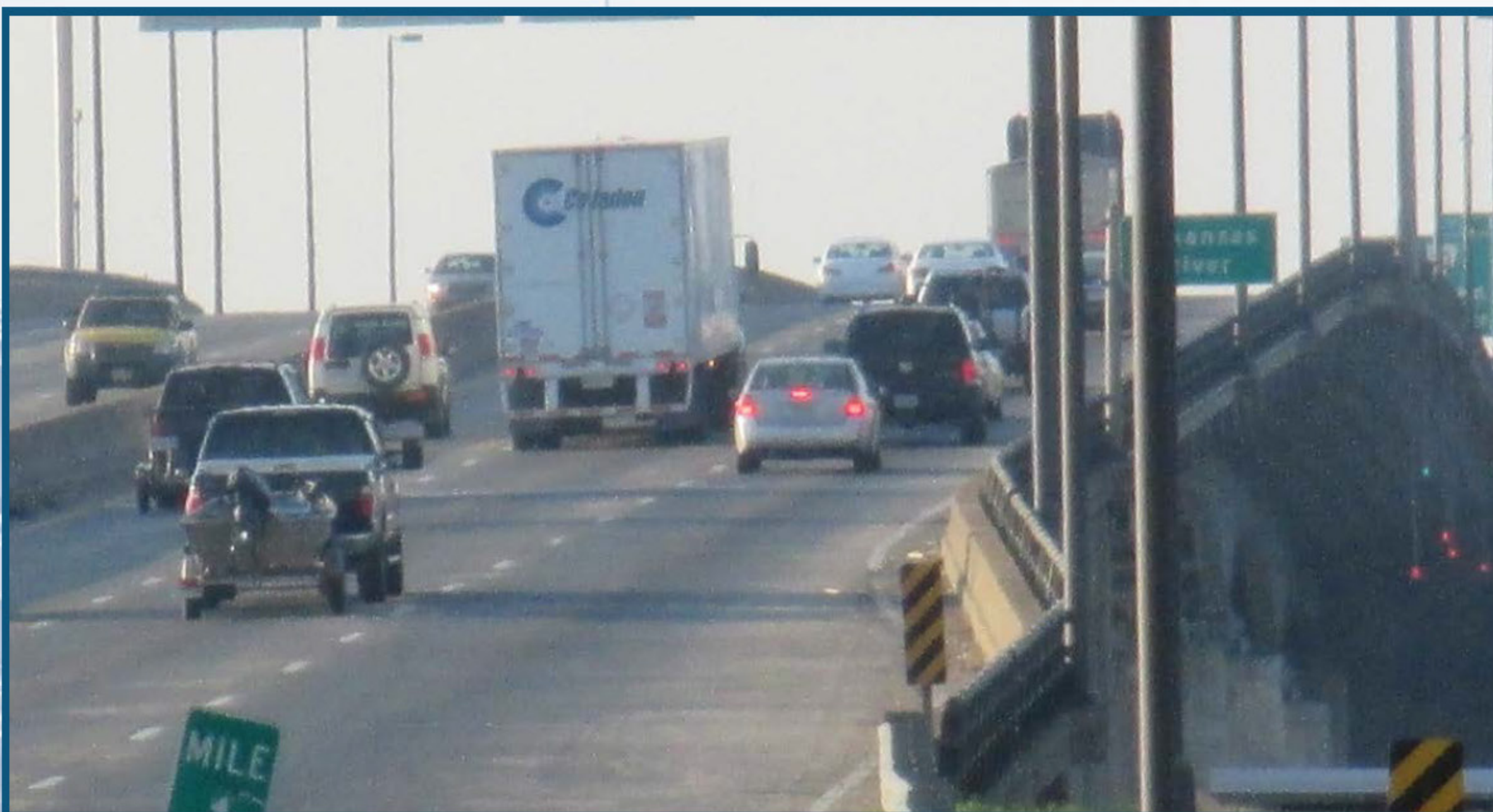
Deficiencies include pavement cracking, patch deterioration, joint separation, and raveling.

Functional Roadway Deficiencies



Deficiencies include ramps lacking recommended lane lengths.

Structural Bridge Deficiencies



The I-30 Bridge is classified as structurally deficient. Structurally deficient does not imply that the bridge is unsafe, but it does mean that additional maintenance and repair are needed to keep it in service, and future rehabilitation or replacement is needed to address deficiencies.

Functional Bridge Deficiencies



Deficiencies include lack of adequate shoulder widths on bridges.